

# Boutique London Lets

London, in style!

## Who are *Boutique London Lets*?

*Boutique London Lets* strive to provide 5 star accommodations within the comfort and convenience of centrally located London apartments.

At *Boutique Lets*, our apartments provide more amenities, space and comfort, than a hotel – but at cheaper rates! Our apartments offer two bedrooms, fully functioning kitchens, and comfortable lounge rooms allowing you to discover London without compromising on lifestyle or comfort. Our apartments can accommodate up to six people in utmost comfort.

All *Boutique* apartments cater for a broad range of size and budgetary requirements. All our apartments are centrally located and are chosen with locality, convenience, high interior standard and security in mind.

As with standard hotels, *Boutique* apartments can be booked on a two nightly, weekly or even monthly basis. We cater primarily for tourists (groups or families) but also short-to-medium term corporate lets.

### **Fabulous accommodation:**

Each of our properties offers the best value and quality of accommodation possible: We ensure that each apartment offers premiere:

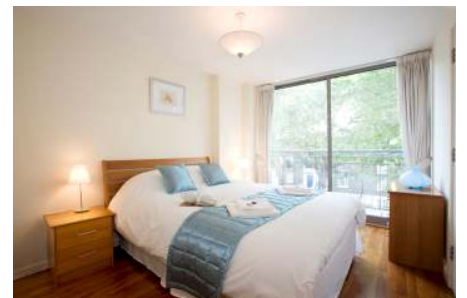
- Touristic location (centrality, access to transport and activities)
- Immediate environment (quality of building, street, neighbours)
- Internal layout, size and decorative quality
- Presentation and comfort – including furnishings and décor
- Safety and security

### **All apartments are modern, stylishly decorated and offer:**

- Fully furnished accommodation.
- Living room, dining area, fully equipped kitchen & two bathrooms.
- Complementary high-speed internet access
- All bedding, towelling, quality linen & basic toiletries provided
- Washing machine, clothes aired, dishwasher & soaps provided.
- Very conveniently located for transport (tube and busses) and set in the heart of Central London.
- Full central heating and (limited flow) hot-water day and night.
- Very quiet and tranquil locations within the centre of London.
- 24 hour a day arrival and departure facility.



The St James' Apartment Kitchen



The Waterloo Apartment bedroom





# Boutique London Lets

London, in style!

## The Regency Apartment:

### At a glance:

<b>No. of bedrooms:</b>	Two double.
<b>Other:</b>	Two bathrooms (1 x en-suite), separate kitchen, living room (dining included).
<b>Size:</b>	721sqft / 67 sqm
<b>Underground station:</b>	Pimlico Station: 350 meters away.
<b>Close to:</b>	Houses of Parliament (Big Ben) and Buckingham Palace, Southbank, Royal Festival Hall, Tate Britain.
<b>Internet Access:</b>	Yes – broadband.
<b>Décor:</b>	Excellent.
<b>Furnishings:</b>	Contemporary, fully furnished.
<b>Further guests:</b>	Potential to sleep 6 guests max.
<b>Location:</b>	SW1p 4AD
<b>Smoking?</b>	No smoking in apartment or building.

Situated in Westminster, The Regency Apartment is only meters from the beautiful and tranquil Vincent Square Cricket Fields and only a short walk to Victoria, Westminster, Houses of Parliament and Hyde Park. This is an exceptionally located apartment, in a very quiet and peaceful location.

The apartment is set within an architecturally designed period-conversion. The Regency Apartment modern furnishing, decor and fittings throughout as well as orthopaedic beds, Egyptian cotton duvet covers and sheets. This stunning apartment will impress even the most discerning traveller.

### Regency Apartment indicative rates (per night):

2-3 nights: £214.50

4-7 nights: £183.50

8-13 nights: £167.50

2-4 weeks: £156.75

5+ weeks: from £120.50!

Nightly supplement (over 4 guests): £20 per person per night

Prices shown are base prices. Levies may apply during peak seasons & holidays, discounts may apply in low seasons. Minimum night restrictions may also apply. A 2% transaction fee applies.

# Boutique London Lets

London, in style!

## Regency Apartment Photos:

We are very proud of this spacious and bright central London apartment



Bright living room



Dining facilities



The main bathroom



Main bedroom with en-suite



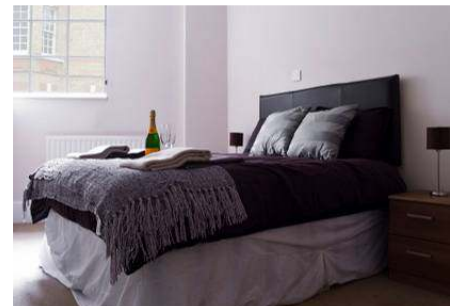
Set in a converted London school house



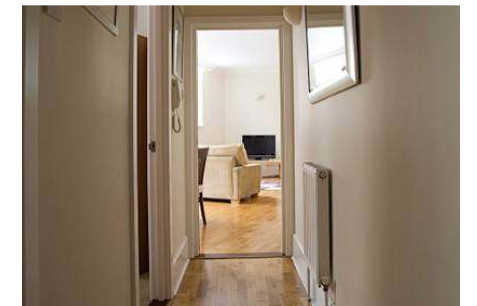
Fully equipped kitchen



Free fast broadband



Regency Suite



Spacious accommodation



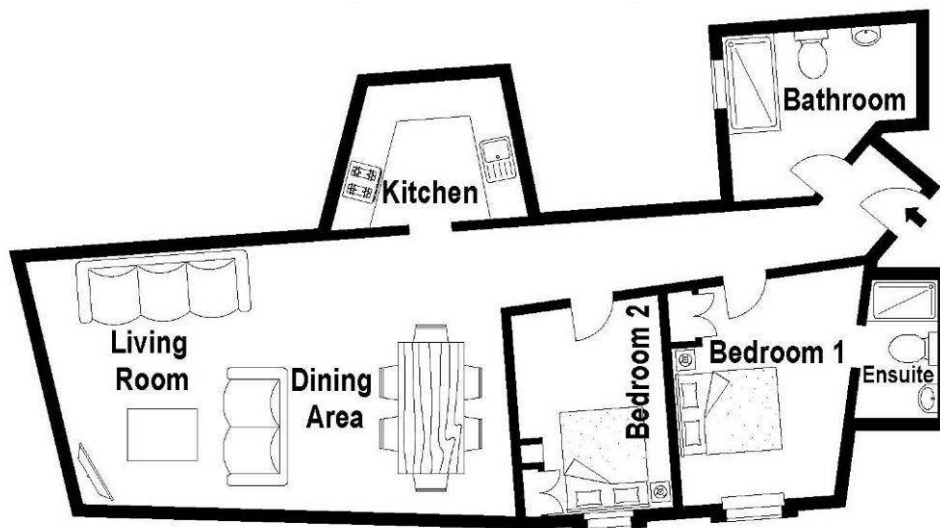
# Boutique London Lets

London, in style!

## The Regency Suite floor plan:

This is the floor plan for our apartment. It is very spacious and fully furnished. Some of the actual furniture (size and placement) may differ to the diagram below.

Apartment size: 721 sqft – 67 m<sup>2</sup>





# Boutique London Lets

London, in style!

## Optional Extras:

We offer a range of optional services to make your stay more enjoyable and convenient.

### **-Out of hour's arrival:**

For your convenience key delivery and pick-up is a personalised service. Between 5am-10pm (Mon – Sun) this is complimentary, there is a small charge out of these hours of **£50**. Please advise us of your arrival time on booking (can be paid afterward if unsure).

### **-House keeping services:**

Guests can request to have the apartment cleaned and all linen changed during their stay. Please allow 48hrs notice to arrange: **£50**

### **-Cot for baby:**

A high quality fold-out cot for your baby and assortment of baby blankets and linen. **£5 per night**

### **-Fold-out beds (for existing and extra guests):**

There is a very comfortable sofa bed in the living room. Please advise us if you wish to use this in advance. For groups over four people, the use of the bed is included in the extra person tariff. For groups of people **under** four, whom require an extra bed, there is a fee of **£15 per person per night**. This includes the bedding and towels. **£15 per person per night (groups under 4)**.

### **-Early check-in or late check-out:**

Later check-outs or earlier check-ins can be arranged subject to availability. See below for details. There is a partial stay fee applicable of **£75 per request**.

**Please let us know when booking if you require any of these services.**

Prices are subject to change – please enquire at time of booking.



# Boutique London Lets

London, in style!

## Booking details, terms and conditions:

### Check-in and check-out:

**Check in time: from 2.30pm**

**Check-out time: before 10.00am**

- **Check in time: FROM 2.30pm – no prior luggage drop-off or storage available.**  
Due to the nature of our apartments, you **may not** arrive at the apartment earlier than the arranged check-in time. This includes for luggage drop-off purposes.
- **Early check-in option: EXTRA PAYMENT REQUIRED (booked in advance).**  
If you wish to check-in **before 2.30pm but after 10.00 am**, please advise us at the time of booking. **An additional charge of £75 applies. If you desire to arrive any earlier than 10.00am you will need to pay the full tariff for the next night.** We will strive to accommodate you subject to availability – this must be booked in advance.

**Early check-ins must be approved and paid for at time of booking. We are unable to accommodate last minute early check-in requests. We are unable to store luggage prior to check-in.**

- **Check –out time IS 10.00am – no luggage storage available after departure.**  
We ask that you vacate the apartment promptly as our cleaners will require the apartment empty in preparation for the next guest.
- **Late check-out option: EXTRA PAYMENT REQUIRED (booked in advance).**  
If you wish to check out **after 10.00am and before 6pm**, please advise us at the time of booking. **An additional charge of £75 applies. If you desire to stay any later than 6pm, you will need to pay the full tariff for the next night.** We will strive to accommodate you subject to availability – must be booked in advance.

**Late check-outs must be approved and paid for at time of booking. We are unable to accommodate last minute late check-out requests. We are unable to store luggage after check-out.**

### Booking reservations and payments:

- Bookings must be reserved with a 20% deposit.
- The **full outstanding amount must be paid TWO weeks prior to arriving** at the apartment. The guest is liable for a £40 late payment fee and/or cancellation of their



# Boutique London Lets

London, in style!

booking if full payment is not received before this time.

- A security deposit of £200.00 is required from all guests. We only take authorisation for this payment and no funds are debited from your account, unless necessary. This is automatically cancelled after checkout after a satisfactory inspection of the apartment/unless in the unlikely event of damage sustained during a guest's stayed.

### **Payment options:**

Payment is accepted only via Google Checkout (2% transaction fee applies). To pay by Google Checkout, we shall email you an invoice from which you can pay easily and securely online. It is a very simple, safe and efficient payment method.

### **Cancellations:**

The 20% booking deposit is non-refundable. The 80% full balance payment is due **TWO WEEKS** before arrival. Feel free to pay the full balance at any time. We reserve the right to cancel your booking if we do not receive full payment two weeks prior to arrival. The full balance will be forfeited if you cancel **only within TWO WEEKS** of arrival. If you cancel before this time, the 80% balancing payment will be refunded.

### **Luggage Storage:**

**Unfortunately we provide no luggage storage service either before or after your stay.**

Due to the nature of the apartments, we do not have access to communal areas or lobbies. Therefore we have no ability to store any of your luggages outside of your booked stay.

### **Booking price and quote policy:**

We reserve the right to change advertised prices without notice. Existing quotes will be honoured under these circumstances. **If you book your apartment, then the price that you have done so at is the price that you will pay** – regardless of future price movements.

### **Property locations:**

If you wish to view the property location on a map, please enter the postcode of the property (see above) into Google Maps UK: [www.maps.google.co.uk](http://www.maps.google.co.uk).

### **Contact information:**

Your contacts are Ian, Derek or Nicole. Contact us by email (preferred) or phone:

Email: [boutiquelondonlets@gmail.com](mailto:boutiquelondonlets@gmail.com)

Phone: +44 (0) 845 680 0 679 (please call during UK business hours only)